

DRAFT



THE SCHOOL BOARD OF BROWARD COUNTY, FLORIDA
PROPOSED
2019-2020 ORGANIZATIONAL CHART



THE SCHOOL BOARD OF BROWARD COUNTY, FLORIDA

PROPOSED

2019-2020 ORGANIZATIONAL CHART

DRAFT

School Board Appointed Committees & Public Stakeholders..... 1

Superintendent of Schools..... 2

General Counsel..... 3

Chief School Performance & Accountability Officer..... 4

Chief Academic Officer..... 5-7

Learning & Development Support..... 5

Exceptional Student Learning Support..... 6

Student Learning..... 7

Chief Student Support Initiatives & Recovery..... 8

Chief Auditor..... 9

Chief Facilities Officer..... 10

Chief Financial Officer..... 11

Chief Human Resources & Equity Officer..... 12

Chief Information Officer..... 13

Chief Portfolio Services Officer..... 14

Chief Communications Officer..... 15

Chief of Staff..... 16

Chief Safety, Security & Emergency Preparedness Officer..... 17

Chief Strategy & Operations Officer..... 18-19

Business Support Center, Grants Administration, Strategic Implementation & Accountability..... 18

Food & Nutrition Services, Procurement & Warehousing Services, Supplier Diversity & Outreach, Student Transportation & Fleet Services..... 19



SCHOOL BOARD APPOINTED COMMITTEES & PUBLIC STAKEHOLDERS

**THE SCHOOL BOARD OF BROWARD COUNTY, FL
2019-2020 PROPOSED ORGANIZATIONAL CHART**

DRAFT

Legend

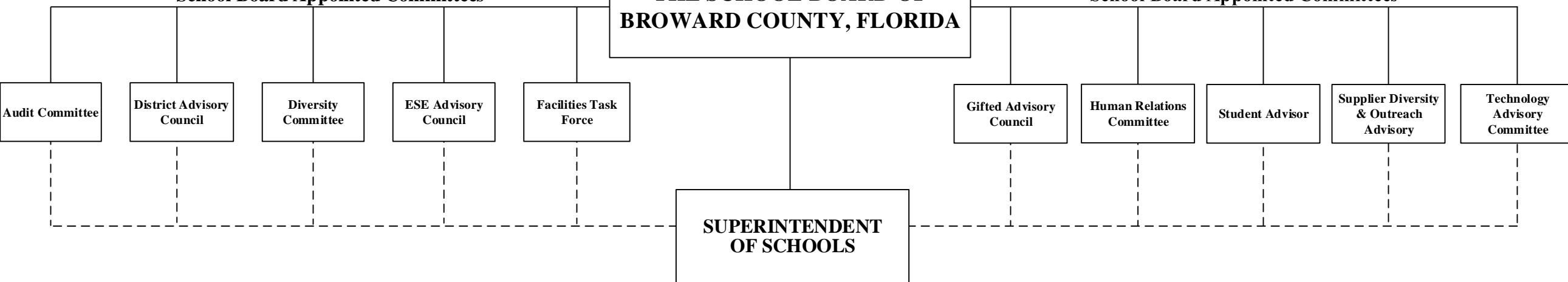
Funding from sources other than General Funds	New Position Job Description Exists N	Reporting Change from Different Division R
New Position Job Description Does Not Exist N ✓	Job Study on Existing Position J	Alignment Change within same Division A
Revision to Existing Job Description/Title Change ✓	Funding: C Capital FS Food Service <u>Direct Report</u> G General Gr Grant <u>Indirect Report</u>	

**BROWARD COUNTY
COMMUNITY**

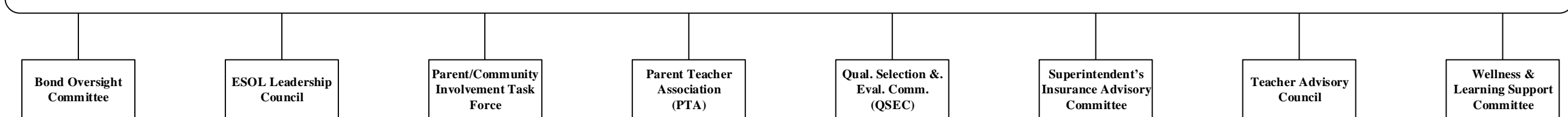
**THE SCHOOL BOARD OF
BROWARD COUNTY, FLORIDA**

School Board Appointed Committees

School Board Appointed Committees



PUBLIC STAKEHOLDERS





THE SCHOOL BOARD OF BROWARD COUNTY, FL
2019-2020 **PROPOSED** ORGANIZATIONAL CHART

DRAFT

Legend

Funding from sources other than General Funds	New Position Job Description Exists N	Reporting Change from Different Division R
New Position Job Description Does Not Exist N ✓	Job Study on Existing Position J	Alignment Change within same Division A
Revision to Existing Job Description/Title Change ✓	Funding: C Capital FS Food Service <u>Direct Report</u> G General Gr Grant <u>Indirect Report</u>	

SUPERINTENDENT

**BROWARD COUNTY
COMMUNITY**

**THE SCHOOL BOARD OF
BROWARD COUNTY, FLORIDA**

GENERAL COUNSEL
Page 3

**SUPERINTENDENT
OF SCHOOLS**

Collective Bargaining Team

CHIEF OF STAFF (S)

Page 16

**DIRECTOR
Legislative Affairs** (D)

**COORDINATOR
Governmental Affairs** (27)

**CHIEF
SAFETY, SECURITY &
EMERGENCY
PREPAREDNESS** (S)
Page 17

**CHIEF SCHOOL
PERFORMANCE &
ACCOUNTABILITY
OFFICER**

Page 4

**CHIEF ACADEMIC
OFFICER**

Pages 5-7

**CHIEF
STUDENT SUPPORT
INITIATIVES**

Page 8

Recovery Team

CHIEF AUDITOR

Page 9

**CHIEF FACILITIES
OFFICER**

Page 10

**CHIEF FINANCIAL
OFFICER**

Page 11

**CHIEF HUMAN
RESOURCES & EQUITY
OFFICER**

Page 12

**CHIEF
INFORMATION
OFFICER**

Page 13

**CHIEF PORTFOLIO
SERVICES OFFICER**

Page 14

**CHIEF
PUBLIC INFORMATION
COMMUNICATIONS
OFFICER**

Page 15

**CHIEF STRATEGY &
OPERATIONS OFFICER**

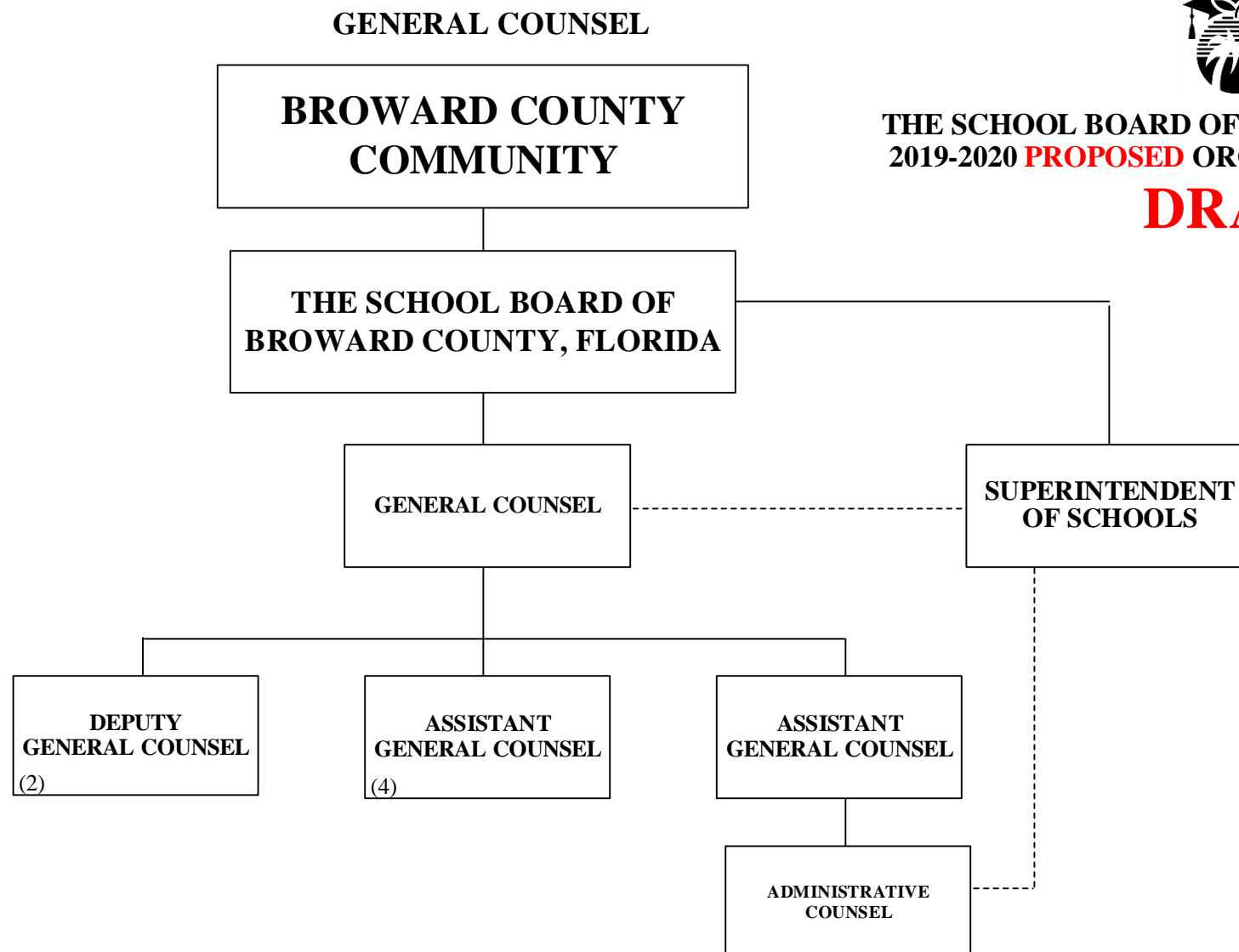
Pages 18-19



**THE SCHOOL BOARD OF BROWARD COUNTY, FL
2019-2020 PROPOSED ORGANIZATIONAL CHART**

DRAFT

Legend		
Funding from sources other than General Funds N	New Position Job Description Exists N	Reporting Change from Different Division R
New Position Job Description Does Not Exist N ✓	Job Study on Existing Position N	Alignment Change within same Division A
Revision to Existing Job Description/Title Change ✓	Funding: C Capital FS Food Service <u>Direct Report</u> G General Gr Grant <u>Indirect Report</u>	





SCHOOL PERFORMANCE & ACCOUNTABILITY OSPA

THE SCHOOL BOARD OF BROWARD COUNTY, FL
2019-2020 **PROPOSED** ORGANIZATIONAL CHART

DRAFT

Legend

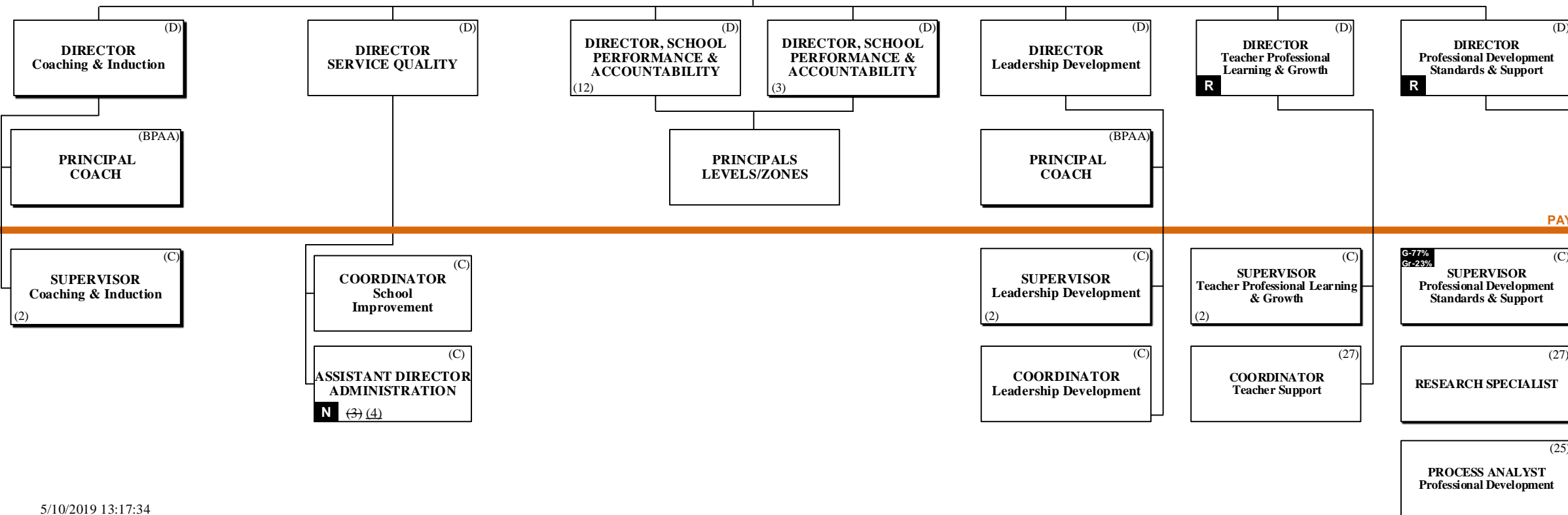
Funding from sources other than General Funds	New Position Job Description Exists N	Reporting Change from Different Division R
New Position Job Description Does Not Exist N	Job Study on Existing Position 	Alignment Change within same Division A
Revision to Existing Job Description/Title Change ✓	Funding: C Capital FS Food Service <u>Direct Report</u> G General Gr Grant <u>Indirect Report</u>	

THE SCHOOL BOARD OF BROWARD COUNTY, FLORIDA

SUPERINTENDENT OF SCHOOLS

CHIEF SCHOOL PERFORMANCE & ACCOUNTABILITY OFFICER (S)

PAY BANDS 'S' & 'E'



PAY BAND 'D'

PAY BANDS 'C' & 'B'

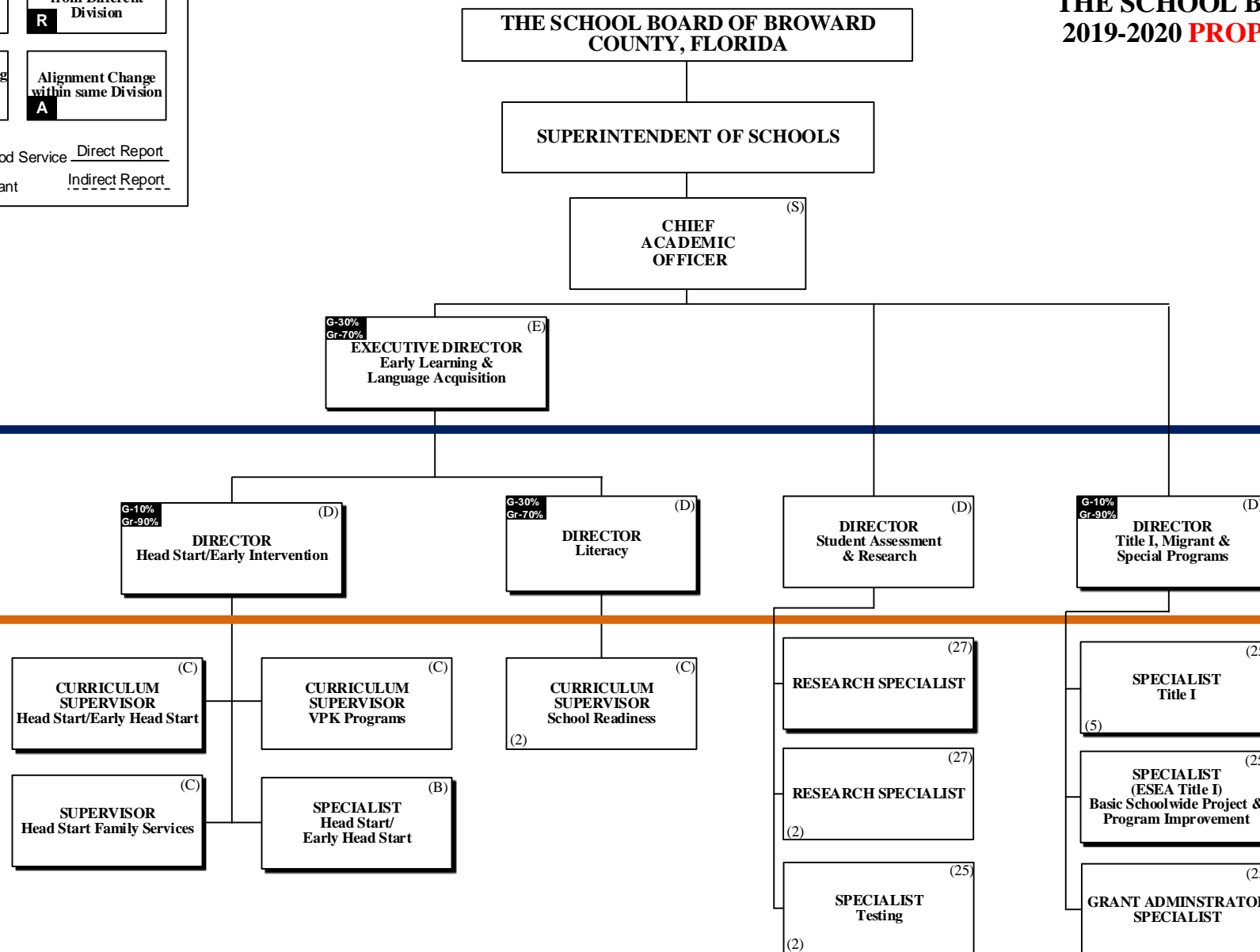


ACADEMICS LEARNING & DEVELOPMENT SUPPORT

**THE SCHOOL BOARD OF BROWARD COUNTY, FL
2019-2020 PROPOSED ORGANIZATIONAL CHART
DRAFT**

Legend

Funding from sources other than General Funds N	New Position Job Description Exists N	Reporting Change from Different Division R
New Position Job Description Does Not Exist N ✓	Job Study on Existing Position N	Alignment Change within same Division A
Revision to Existing Job Description/Title Change ✓	Funding: C Capital FS Food Service <u>Direct Report</u> G General Gr Grant <u>Indirect Report</u>	



PAY BANDS 'S' & 'E'

PAY BAND 'D'

ACADEMICS EXCEPTIONAL STUDENT LEARNING SUPPORT



**THE SCHOOL BOARD OF BROWARD COUNTY, FL
2019-2020 PROPOSED ORGANIZATIONAL CHART**

DRAFT

Legend

Funding from sources other than General Funds <input type="checkbox"/>	New Position Job Description Exists <input type="checkbox"/> N	Reporting Change from Different Division <input type="checkbox"/> R
New Position Job Description Does Not Exist <input type="checkbox"/> N <input checked="" type="checkbox"/>	Job Study on Existing Position <input checked="" type="checkbox"/>	Alignment Change within same Division <input type="checkbox"/> A
Revision to Existing Job Description/Title Change <input checked="" type="checkbox"/>	Funding: <input type="checkbox"/> C Capital <input type="checkbox"/> FS Food Service <u>Direct Report</u> <input type="checkbox"/> G General <input type="checkbox"/> Gr Grant <u>Indirect Report</u>	

THE SCHOOL BOARD OF BROWARD COUNTY, FLORIDA

SUPERINTENDENT OF SCHOOLS

CHIEF ACADEMIC OFFICER ^(S)

EXECUTIVE DIRECTOR
Exceptional Student Learning Support ^(E)

PAY BANDS 'S' & 'E'

DIRECTOR ^(D)
Exceptional Student Learning Support (Pre-K/Elementary)

DIRECTOR ^(D)
Exceptional Student Learning Support (Secondary)

DIRECTOR ^(D)
Exceptional Student Learning Support Services

PAY BAND 'D'

CURRICULUM SUPERVISOR ^(C)
Autism Spectrum Disorder

CURRICULUM SUPERVISOR ^(C)
Emotional/Behavioral Disabilities

CURRICULUM SUPERVISOR ^(C)
DHH/Visually Impaired

CURRICULUM SUPERVISOR ^(C)
Behavior

DISTRICT COORDINATOR ^(C)
Due Process

DISTRICT COORDINATOR ^(C)
Due Process

SUPERVISOR ^(C)
FL Diagnostic & Learning Resource System

CURRICULUM SUPERVISOR ^(C)
Intellectual Disabilities

SPECIALIST ^(B)
Deaf and Hard of Hearing Charter Schools

CURRICULUM SUPERVISOR ^(C)
Exceptional Student Learning Support

DISTRICT COORDINATOR ^(C)
Psychological Services ⁽³⁾

DISTRICT COORDINATOR ⁽²⁷⁾
Medicaid

CURRICULUM SUPERVISOR ^(C)
Preschool ESLSE

CURRICULUM SUPERVISOR ^(C)
Specific Learning Disabilities

SPECIALIST ^(B)
Visually Impaired Hospital Homebound/Private Schools

SUPERVISOR ^(C)
ESLSE Transition Services

DISTRICT COORDINATOR ^(C)
Speech-Language Physically Impaired

DISTRICT COORDINATOR ^(C)
Severely Emotionally Disturbed Network

MANAGER ⁽²⁶⁾
SSS/ESLSE Electronic Management System EZ IEP



ACADEMICS STUDENT LEARNING

THE SCHOOL BOARD OF BROWARD
COUNTY, FLORIDA

THE SCHOOL BOARD OF BROWARD COUNTY, FL
2019-2020 **PROPOSED** ORGANIZATIONAL CHART

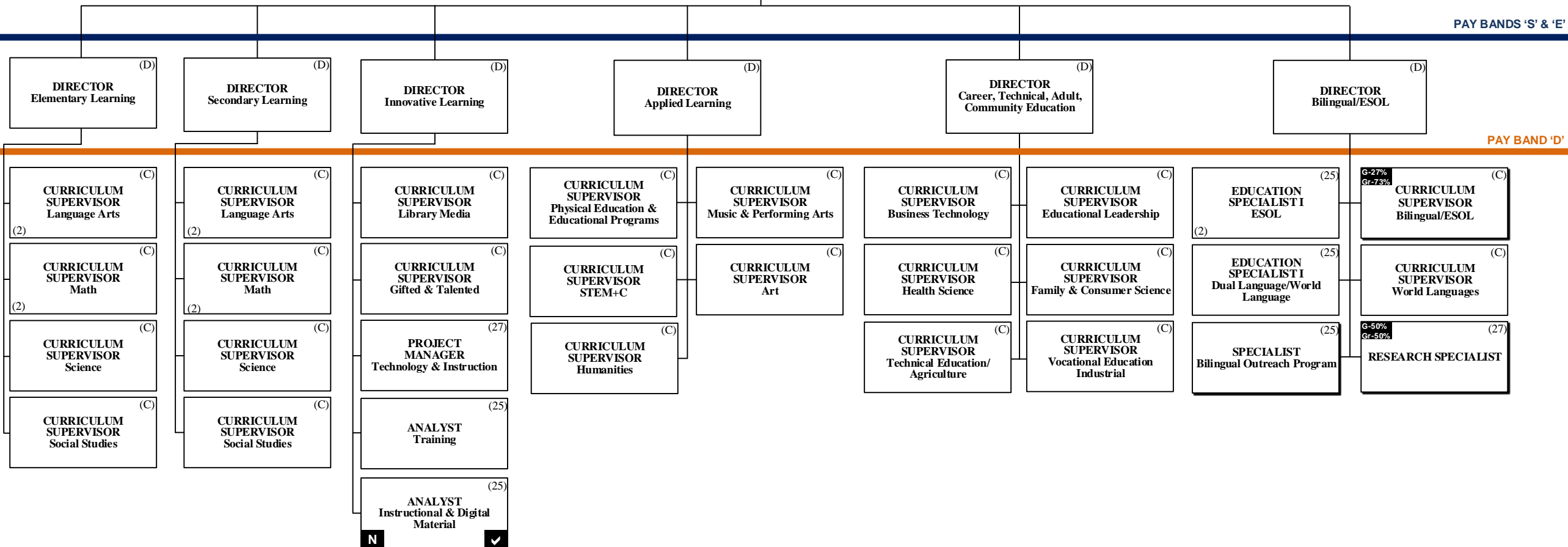
DRAFT

Legend

Funding from sources other than General Funds	New Position Job Description Exists N	Reporting Change from Different Division R
New Position Job Description Does Not Exist N ✓	Job Study on Existing Position J	Alignment Change within same Division A
Revision to Existing Job Description/Title Change ✓	Funding: C Capital FS Food Service <u>Direct Report</u> G General Gr Grant <u>Indirect Report</u>	

SUPERINTENDENT OF SCHOOLS

CHIEF
ACADEMIC
OFFICER (S)



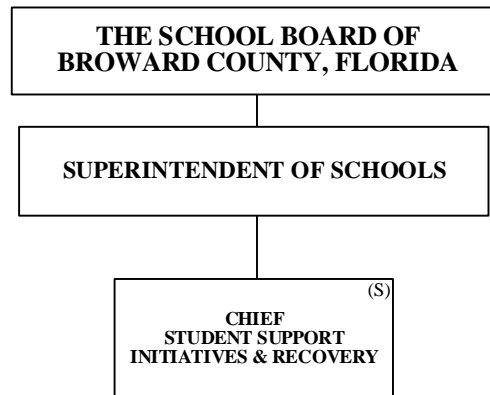


STUDENT SUPPORT INITIATIVES & RECOVERY

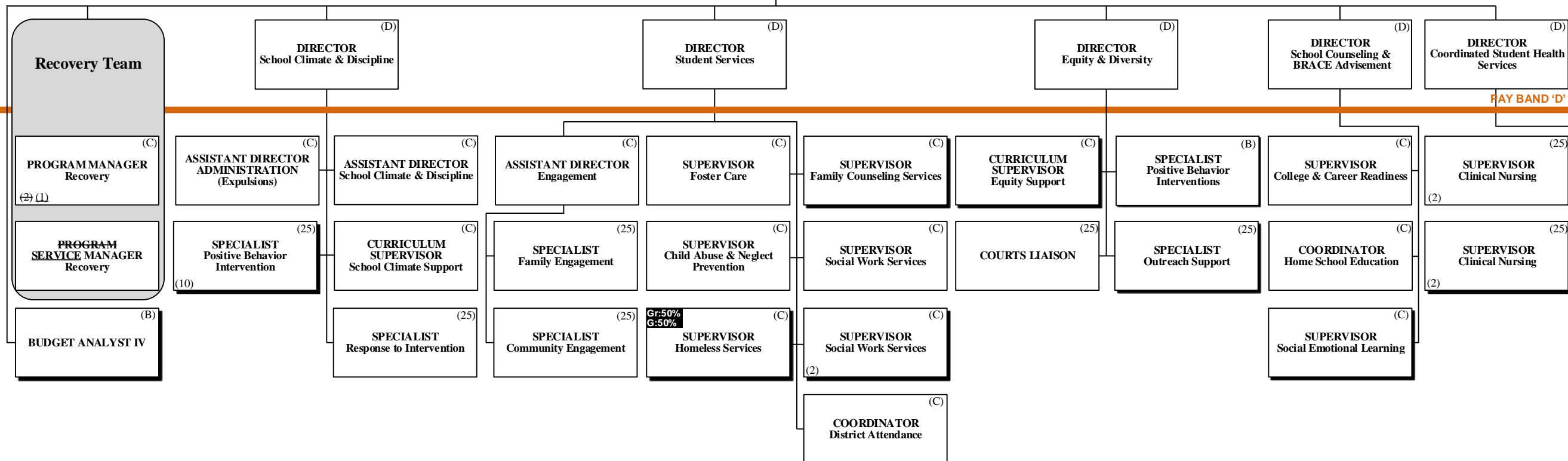
THE SCHOOL BOARD OF BROWARD COUNTY, FL
2019-2020 **PROPOSED** ORGANIZATIONAL CHART
DRAFT

Legend

Funding from sources other than General Funds	New Position Job Description Exists N	Reporting Change from Different Division R
New Position Job Description Does Not Exist N ✓	Job Study on Existing Position 	Alignment Change within same Division A
Revision to Existing Job Description/Title Change ✓	Funding: C Capital FS Food Service <u>Direct Report</u> G General Gr Grant <u>Indirect Report</u>	



PAY BANDS 'S' & 'E'



PAY BAND 'D'

PAY BANDS 'C' & 'E'

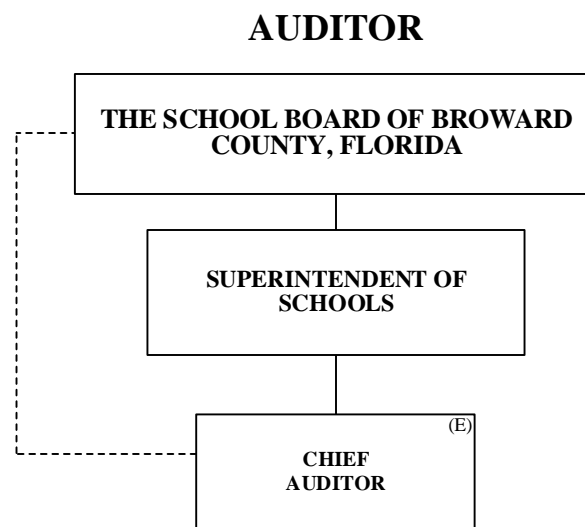


THE SCHOOL BOARD OF BROWARD COUNTY, FL
2019-2020 **PROPOSED** ORGANIZATIONAL CHART

DRAFT

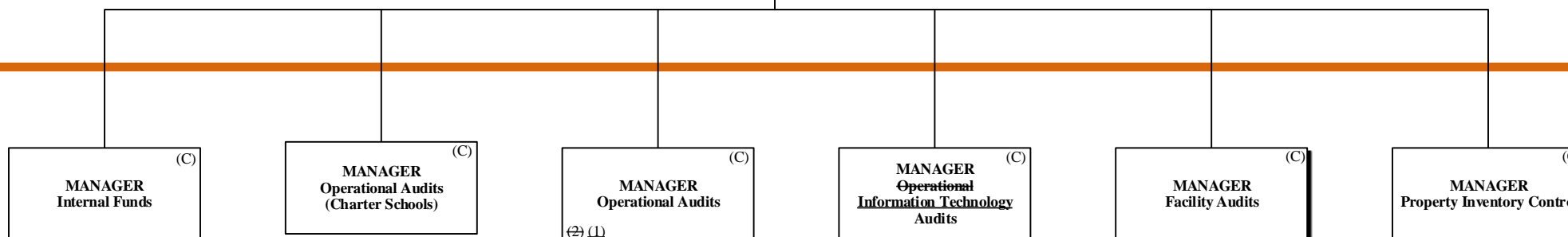
Legend

Funding from sources other than General Funds	New Position Job Description Exists N	Reporting Change from Different Division R
New Position Job Description Does Not Exist N ✓	Job Study on Existing Position 	Alignment Change within same Division A
Revision to Existing Job Description/Title Change ✓	Funding: C Capital FS Food Service <u>Direct Report</u> G General Gr Grant <u>Indirect Report</u>	



PAY BANDS 'S' & 'E'

PAY BAND 'D'



PAY BANDS 'C' & 'B'



FACILITIES

THE SCHOOL BOARD OF BROWARD COUNTY, FLORIDA

THE SCHOOL BOARD OF BROWARD COUNTY, FL
2019-2020 **PROPOSED** ORGANIZATIONAL CHART

DRAFT

Legend

Funding from sources other than General Funds N	New Position Job Description Exists N	Reporting Change from Different Division R
New Position Job Description Does Not Exist N ✓	Job Study on Existing Position N	Alignment Change within same Division A
Revision to Existing Job Description/Title Change ✓	Funding: C Capital FS Food Service <u>Direct Report</u> G General Gr Grant <u>Indirect Report</u>	

SUPERINTENDENT OF SCHOOLS

CHIEF FACILITIES OFFICER (S)

EXECUTIVE DIRECTOR Capital Programs (E)
N

PAY BANDS 'S' & 'E'

DIRECTOR Construction (D)
A

DIRECTOR Program Controls (D)
A

DIRECTOR Pre-Construction (D)

DIRECTOR Physical Plant Operations (D)
C-70%
G-30%

PAY BAND 'D'

MANAGER Construction (C)

MANAGER Construction (C)
(2)

~~MANAGER Contract Administration (C)
(27)~~

MANAGER Database Administration (C)
(27)

MANAGER Mechanical Engineering (C)

MANAGER Architectural Engineering (C)

MANAGER Electrical Engineering (C)

MANAGER ADA Accessibility (C)

SPECIALIST ADA Accessibility (C)
(25)

PROJECT MANAGER III (C)
A
(27)

AREA MANAGER Trades Zone 1 (C)
C-70%
G-30%

AREA MANAGER Trades Zone 2 (C)
C-70%
G-30%

TRADE SUPERVISOR (C)
(9)

AREA MANAGER Trades Zone 3 (C)
C-70%
G-30%

AREA MANAGER Trades District (C)
C-70%
G-30%

MANAGER Facilities Support Services (C)

SUPERVISOR Work Flow/Labor Utilization (C)
C-55%
G-45%
(25)

SUPERVISOR Planning & Scheduling (C)
C-55%
G-45%
(25)

MANAGER PPO Finance (C)

MANAGER Custodial/Grounds (C)
C-55%
G-45%
(26)

MANAGER Grounds (C)
(26)

DIRECTOR MANAGER Business Process & Performance Improvement (D)
N (C)



THE SCHOOL BOARD OF BROWARD COUNTY, FL
2019-2020 **PROPOSED** ORGANIZATIONAL CHART

DRAFT

FINANCIAL MANAGEMENT

THE SCHOOL BOARD OF BROWARD COUNTY, FLORIDA

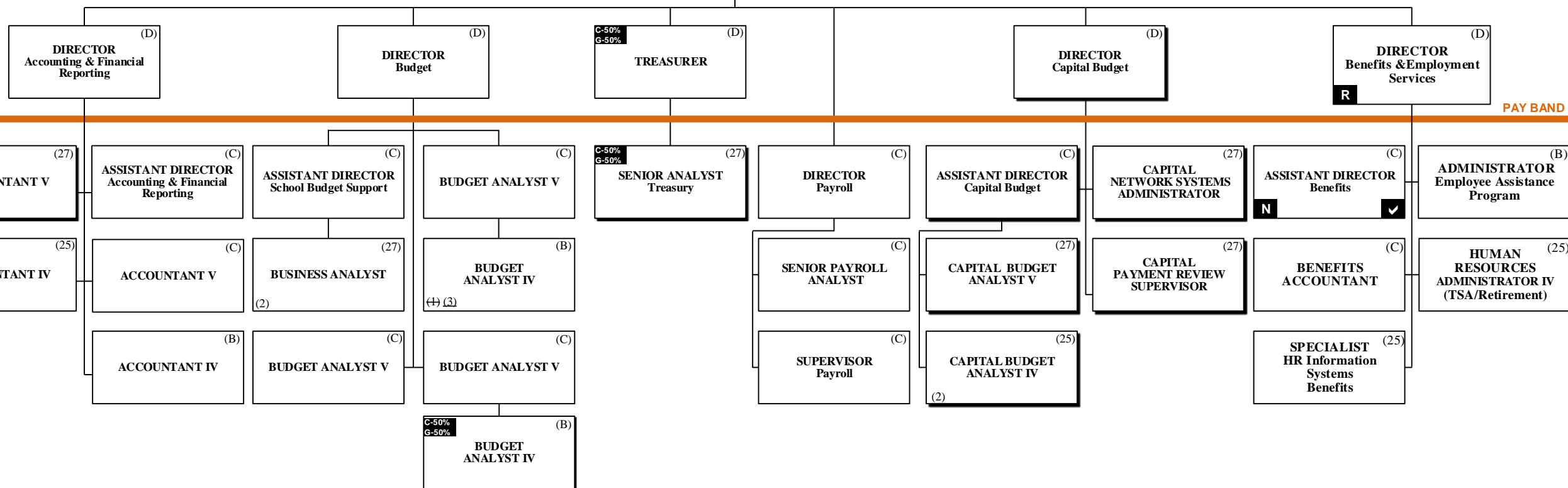
SUPERINTENDENT OF SCHOOLS

C-20%
G-80%
CHIEF FINANCIAL OFFICER (CFO) (S)

Legend

Funding from sources other than General Funds	New Position Job Description Exists N	Reporting Change from Different Division R
New Position Job Description Does Not Exist N	Job Study on Existing Position N	Alignment Change within same Division A
Revision to Existing Job Description/Title Change ✓	Funding: C Capital FS Food Service <u>Direct Report</u> G General Gr Grant <u>Indirect Report</u>	

PAY BANDS 'S' & 'E'



PAY BAND 'D'

HUMAN RESOURCES & EQUITY

THE SCHOOL BOARD OF BROWARD COUNTY, FLORIDA



THE SCHOOL BOARD OF BROWARD COUNTY, FL
2019-2020 **PROPOSED** ORGANIZATIONAL CHART

DRAFT

Legend

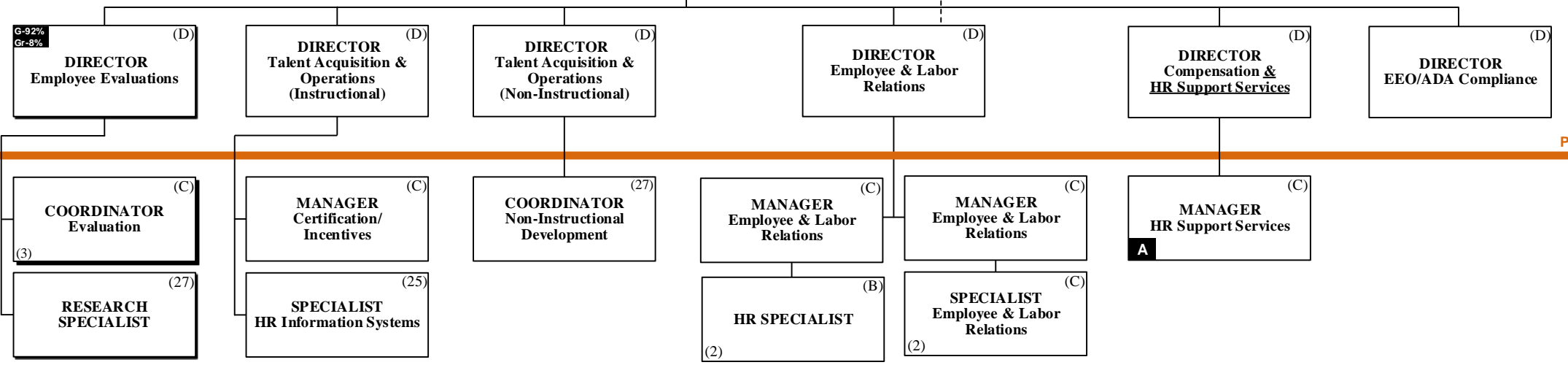
Funding from sources other than General Funds	New Position Job Description Exists N	Reporting Change from Different Division R
New Position Job Description Does Not Exist N	Job Study on Existing Position J	Alignment Change within same Division A
Revision to Existing Job Description/Title Change ✓	Funding: C Capital FS Food Service <u>Direct Report</u> G General Gr Grant <u>Indirect Report</u>	

SUPERINTENDENT OF SCHOOLS

CHIEF HUMAN RESOURCES & EQUITY OFFICER (S)

Collective Bargaining

PAY BANDS 'S' & 'E'



PAY BAND 'D'



THE SCHOOL BOARD OF BROWARD COUNTY, FL
2019-2020 **PROPOSED** ORGANIZATIONAL CHART
DRAFT

INFORMATION & TECHNOLOGY

THE SCHOOL BOARD OF BROWARD COUNTY, FLORIDA

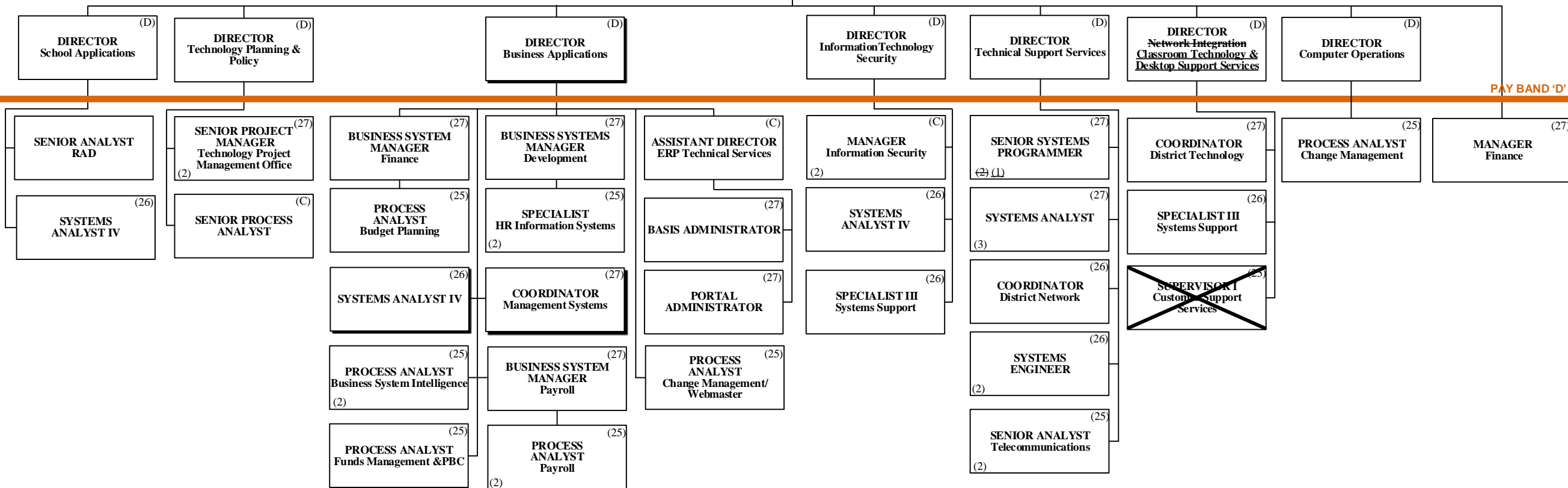
SUPERINTENDENT OF SCHOOLS

CHIEF INFORMATION OFFICER (S)

Legend

Funding from sources other than General Funds	New Position Job Description Exists N	Reporting Change from Different Division R
New Position Job Description Does Not Exist N	Job Study on Existing Position 	Alignment Change within same Division A
Revision to Existing Job Description/Title Change ✓	Funding: C Capital FS Food Service <u>Direct Report</u> G General Gr Grant <u>Indirect Report</u>	

PAY BANDS 'S' & 'E'



PAY BAND 'D'

ESMAB PAY BANDS 'C' & 'B'
TSP PAY GRADES 25-28

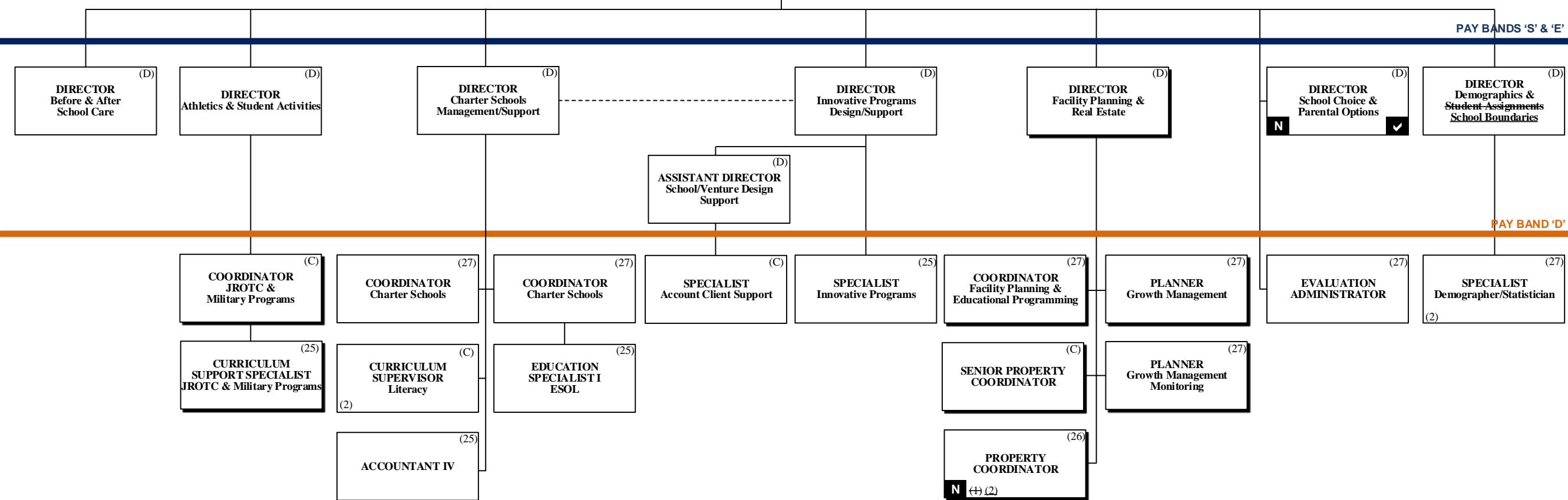
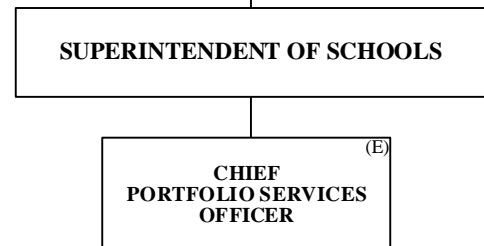


THE SCHOOL BOARD OF BROWARD COUNTY, FL
 2019-2020 **PROPOSED** ORGANIZATIONAL CHART
DRAFT

PORTFOLIO SERVICES
 THE SCHOOL BOARD OF BROWARD COUNTY, FLORIDA

Legend

Funding from sources other than General Funds	New Position Job Description Exists N	Reporting Change from Different Division R
New Position Job Description Does Not Exist N ✓	Job Study on Existing Position J	Alignment Change within same Division A
Revision to Existing Job Description/Title Change ✓	Funding: C Capital FS Food Service <u>Direct Report</u> G General Gr Grant <u>Indirect Report</u>	



ESMAB PAY BANDS 'C' & 'B'
 TSP PAY GRADES 25-28



**THE SCHOOL BOARD OF BROWARD COUNTY, FL
2019-2020 PROPOSED ORGANIZATIONAL CHART**

DRAFT

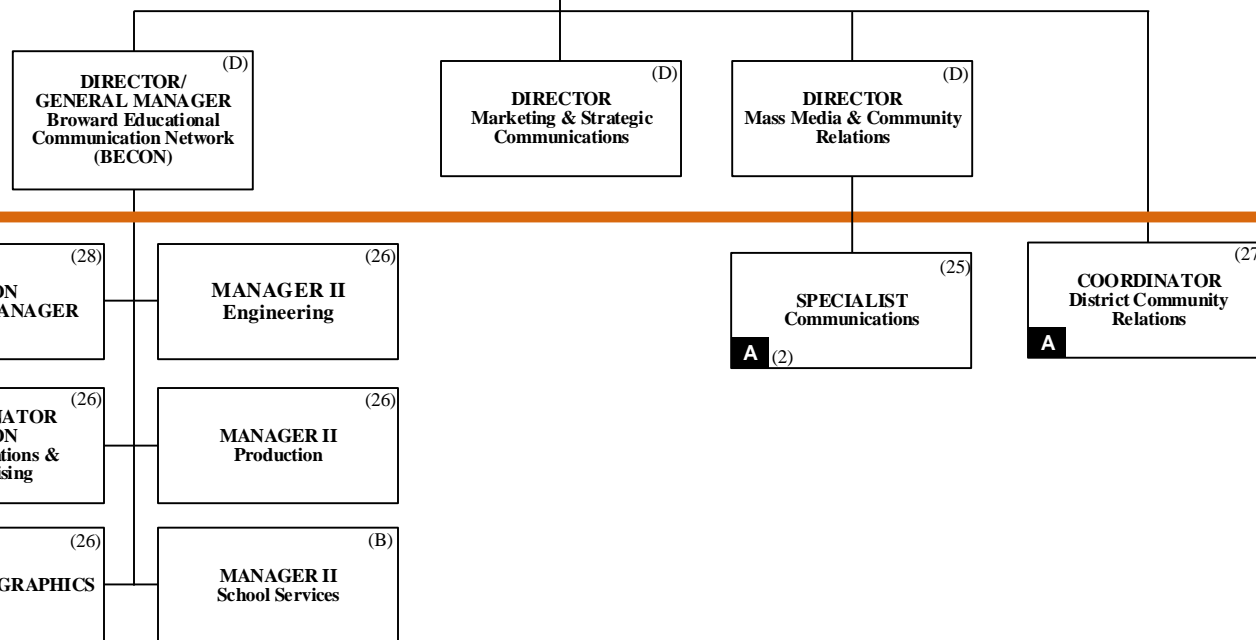
Legend		
Funding from sources other than General Funds N	New Position Job Description Exists N	Reporting Change from Different Division R
New Position Job Description Does Not Exist N ✓	Job Study on Existing Position N	Alignment Change within same Division A
Revision to Existing Job Description/Title Change ✓	Funding: C Capital FS Food Service <u>Direct Report</u> G General Gr Grant <u>Indirect Report</u>	

COMMUNICATIONS
THE SCHOOL BOARD OF BROWARD COUNTY, FLORIDA

SUPERINTENDENT OF SCHOOLS

CHIEF PUBLIC INFORMATION COMMUNICATIONS OFFICER (E)

PAY BANDS 'S' & 'E'



PAY BAND 'D'



CHIEF OF STAFF

THE SCHOOL BOARD OF BROWARD COUNTY, FLORIDA

SUPERINTENDENT OF SCHOOLS

CHIEF OF STAFF (S)

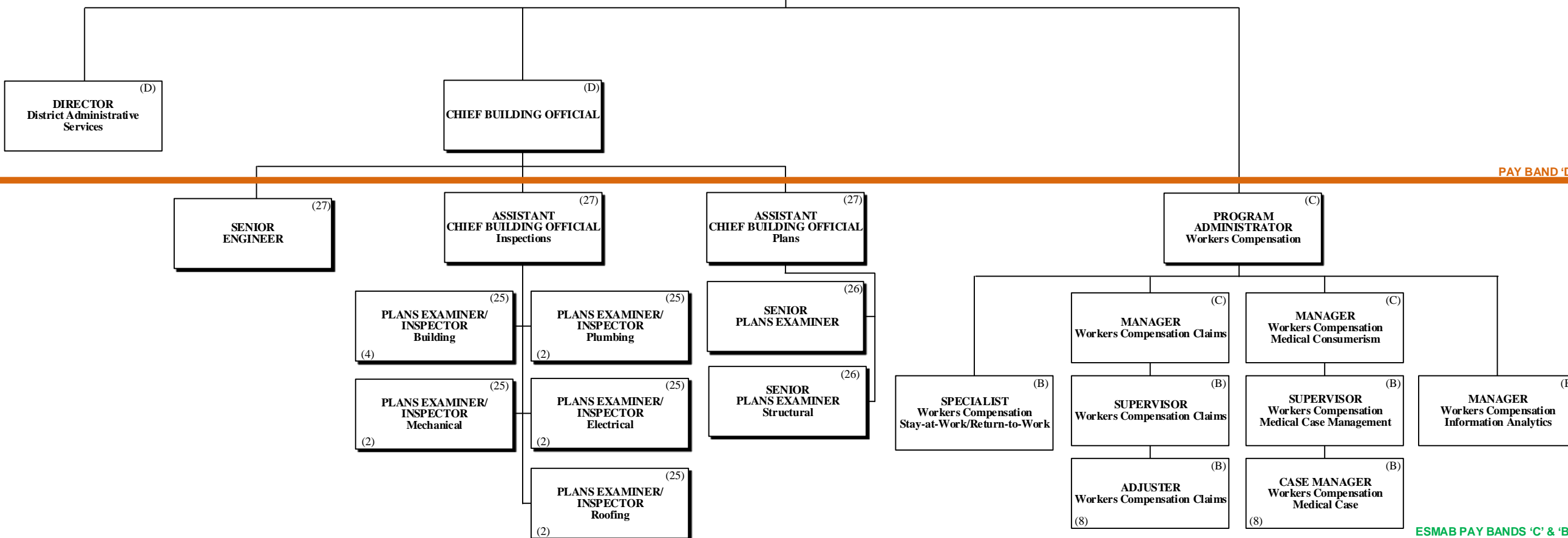
THE SCHOOL BOARD OF BROWARD COUNTY, FL
2019-2020 **PROPOSED** ORGANIZATIONAL CHART

DRAFT

Legend

Funding from sources other than General Funds	New Position Job Description Exists N	Reporting Change from Different Division R
New Position Job Description Does Not Exist N ✓	Job Study on Existing Position J	Alignment Change within same Division A
Revision to Existing Job Description/Title Change ✓	Funding:	
	C Capital	FS Food Service
	G General	Gr Grant
	Direct Report	
	Indirect Report	

PAY BANDS 'S' & 'E'



PAY BAND 'D'

ESMAB PAY BANDS 'C' & 'B'
TSP PAY GRADES 25-28

SAFETY, SECURITY & EMERGENCY PREPAREDNESS



THE SCHOOL BOARD OF BROWARD COUNTY, FLORIDA

**THE SCHOOL BOARD OF BROWARD COUNTY, FL
2019-2020 PROPOSED ORGANIZATIONAL CHART**

DRAFT

Legend

Funding from sources other than General Funds <input type="checkbox"/>	New Position Job Description Exists <input type="checkbox"/>	Reporting Change from Different Division <input type="checkbox"/>
New Position Job Description Does Not Exist <input checked="" type="checkbox"/>	Job Study on Existing Position <input type="checkbox"/>	Alignment Change within same Division <input type="checkbox"/>
Revision to Existing Job Description/Title Change <input checked="" type="checkbox"/>	Funding: <input type="checkbox"/> Capital <input type="checkbox"/> FS Food Service <input type="checkbox"/> Direct Report <input type="checkbox"/> General <input type="checkbox"/> Gr Grant <input type="checkbox"/> Indirect Report	

SUPERINTENDENT OF SCHOOLS

CHIEF SAFETY, SECURITY & EMERGENCY PREPAREDNESS OFFICER (S)

EXECUTIVE DIRECTOR Enterprise Risk & Emergency Preparedness (E)

PAY BANDS 'S' & 'E'

DIRECTOR Risk Management (D)

DIRECTOR Environmental Compliance Health & Safety (D)

DIRECTOR Safety & Security Operations (D)

CHIEF Special Investigative Unit (SIU) (D)

CHIEF FIRE OFFICIAL (D)

~~MAJOR SIU Operations/Investigations (2)~~

PAY BAND 'D'

MANAGER Emergency Management (B)

PERSONNEL ADMINISTRATOR Professional Standards Training/Clearance (C)

MANAGER Environmental Conservation/Utility Management (27)

COORDINATOR Local Education Agency (LEA) (C)

AREA MANAGER Security (25)

DETECTIVE SIU LIEUTENANT (C)
 (2)

DETECTIVE SIU DISTRICT LIAISON School Resource Officers (25)

PLANS EXAMINER/INSPECTOR Fire (25)
 (3)

SENIOR DATA ANALYST (25)

COORDINATOR School Safety (25)

SPECIALIST IV Building Control (25)

PROJECT MANAGER Occupational Health/Environmental Control (25)

DETECTIVE SIU (25)
 (2) (18)

SPECIALIST Safety Training (25)

PROJECT MANAGER I (25)

COORDINATOR Health & Safety (B)



THE SCHOOL BOARD OF BROWARD COUNTY, FL
2019-2020 **PROPOSED** ORGANIZATIONAL CHART

DRAFT

STRATEGY & OPERATIONS

THE SCHOOL BOARD OF BROWARD COUNTY, FLORIDA

SUPERINTENDENT OF SCHOOLS

CHIEF STRATEGY & OPERATIONS OFFICER (S)

EXECUTIVE DIRECTOR Strategic Initiative Management (E)

DIRECTOR Business Support Center (D)

DIRECTOR Grants Administration (D)

DIRECTOR Performance Management (D)

DIRECTOR Program Evaluation (D)

MANAGER Budget (27)

BUSINESS ANALYST (27)
(2)

SUPERVISOR I Printing Services (26)

SENIOR MANAGER Grant Programs (C)

MANAGER Grant Programs Oversight (26)
(2)

GRANTS ADMINISTRATOR Accountability & Reporting (25)

COORDINATOR Performance Management (C)

COORDINATOR Strategic Management (C)

EVALUATION ADMINISTRATOR (27)

PAY BANDS 'S' & 'E'

PAY BAND 'D'

Legend

Funding from sources other than General Funds	New Position Job Description Exists N	Reporting Change from Different Division R
New Position Job Description Does Not Exist N	Job Study on Existing Position J	Alignment Change within same Division A
Revision to Existing Job Description/Title Change ✓	Funding: C Capital FS Food Service <u>Direct Report</u> G General Gr Grant <u>Indirect Report</u>	



STRATEGY & OPERATIONS

THE SCHOOL BOARD OF BROWARD COUNTY, FLORIDA

THE SCHOOL BOARD OF BROWARD COUNTY, FL
2019-2020 **PROPOSED** ORGANIZATIONAL CHART

DRAFT

Legend

Funding from sources other than General Funds	New Position Job Description Exists N	Reporting Change from Different Division R
New Position Job Description Does Not Exist N ✓	Job Study on Existing Position J	Alignment Change within same Division A
Revision to Existing Job Description/Title Change ✓	Funding: C Capital FS Food Service <u>Direct Report</u> G General Gr Grant <u>Indirect Report</u>	

SUPERINTENDENT OF SCHOOLS

CHIEF STRATEGY & OPERATIONS OFFICER (S)

EXECUTIVE DIRECTOR Student Transportation & Fleet Services (E)

PAY BANDS 'S' & 'E'

DIRECTOR Food & Nutrition Services (D)

DIRECTOR Procurement & Warehousing Services (D)

OFFICER Economic Development & Diversity Compliance (D)
C-50%
G-50%
N ✓

MANAGER DIRECTOR Student Transportation Operations & Fleet Services (E)(D)

PAY BAND 'D'

ASSISTANT DIRECTOR Food & Nutrition Services (C)

COORDINATOR Food & Nutrition Services (C)

ASSISTANT DIRECTOR Procurement Compliance (C)

MANAGER Warehousing Services (B)

MANAGER Supplier Diversity & Outreach Program (C)
C-50%
G-50%
A

~~ASSISTANT DIRECTOR Transportation Support Services (C)~~

MANAGER I Transportation Terminal (B)
A (2)

MANAGER I Vehicle Maintenance (C)

MANAGER Centralized Routing (C)

AREA SUPERVISOR Food & Nutrition Services (B)
(11)

FINANCE MANAGER Food & Nutrition Services (C)

MANAGER Strategic Sourcing (C)

MANAGER Construction Sourcing (C)

SENIOR PROCESS ANALYST (C)

COORDINATOR Supplier Diversity & Outreach Program (26)

MANAGER II Transportation Terminal (C)
A (2)

SUPERVISOR Special Needs Transportation (25)
A

SUPERVISOR Vehicle Maintenance (25)
(2)

DATA ANALYST Transportation (25)

AREA SUPERVISOR Special Programs Food & Nutrition Services (B)
(2)

PROGRAM MANAGER Nutrition, Education & Training (26)

PURCHASING AGENT IV (25)

PURCHASING AGENT IV Construction (25)

SENIOR PROCESS ANALYST (C)

COORDINATOR Supplier Diversity & Outreach Program (Compliance) (26)
C-50%
G-50%

ACCOUNTANT V (27)
A

SUPERVISOR Food & Nutrition Services Information Systems (B)

SUPERVISOR Food & Nutrition Services Equipment & Supplies (25)

PROCESS ANALYST Procurement & Warehousing Services (25)
(2)

~~PROCESS ANALYST Maintenance Construction (25)~~